

HNSA thanks Ed Zajkowski for his generous loan of the original document used to create this online version.

D
D
5
0
2

747

DESTROYER №502



NUMBER AND ORDER OF PLANS
1 COVER OR TITLE PAGE
2 DIMENSIONS & DATA
3 OUTBOARD PROFILE
4 INBOARD PROFILE
5 BRIDGES
6 SUPERSTRUCTURE DECK
7 MAIN DECK
8 FIRST PLATFORM
9 SECOND PLATFORM
10 THIRD PLATFORM
11 HOLD
12 MIDSHIP & TYPE CROSS SECTION SKETCHES

CORRECTED TO SUIT SHIP		
PLACE	DATE	SUPERV'R OF SHIPBUILDING
NAVY YARD NEW YORK	21 SEPT. 1943	<i>Wm. Langford</i> ASST. DESIGN SVPT.
MATSON NAVIGATION Co. <small>GUYMARNO</small>	12-1-1944	

BOOKLET OF GENERAL PLANS

GENERAL INFORMATION

LENGTH BETWEEN PERPENDICULARS	369-1 ³ / ₈ "
LENGTH OVERALL	376-5 ⁵ / ₈ "
BREADTH EXTREME OUTSIDE OF PLATING	39-5 ¹ / ₄ "
DRAFT ABOVE BOTTOM OF KEEL AMIDSHIPS DESIGNERS	12-6 ¹ / ₂ "

FIRE PLUGS

LOCATION	NO.	LOCATION	NO.
MAIN DECK	8	FIRST PLATFORM	3
		SECOND PLATFORM	1
TOTAL NO. OF FIRE PLUGS-12			

PROPELLERS

CENTER OF SCREWS FORD. OF A.P.	19'-0 ¹ / ₈ "
℄ OF FORD. STRUT BEARING FORD. OF A.P.	48'-9 ¹ / ₈ "
℄ OF AFTER STRUT BEARING FORD. OF A.P.	24'-1 ¹ / ₂ "
℄ OF RUDDER FORD. OF A.P.	10'-1 ¹ / ₈ "

ACCOMMODATIONS

	BERTHS	LOCKERS	HAMMOCKS
OFFICERS	19		
C. P. O.	15	17	
CREW	284	300	5
TOTAL	318	317	5

HEIGHTS ABOVE D.W.L. (12'-6¹/₂" ABOVE BOTTOM OF KEEL AMIDSHIPS)

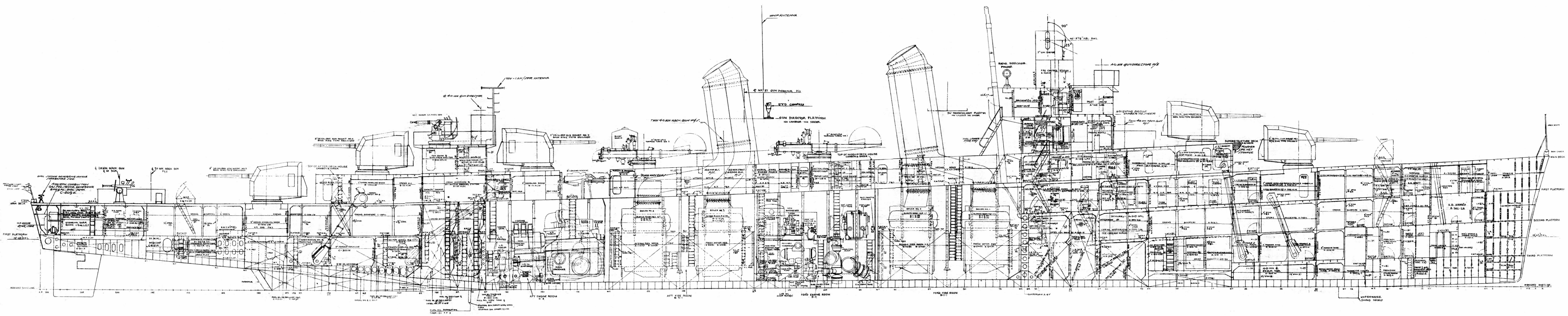
BASE OF TRUCK LIGHT	78'-0"
℄ OF 36" SEARCHLIGHT (2) ON PLATFORM	35'-0 ¹ / ₈ "
℄ OF 24" SEARCHLIGHT (2) ON TOP OF PILOT HOUSE	40'-11 ³ / ₈ "
℄ OF 12" SEARCHLIGHT (2) ON NAVIGATING BRIDGE	35'-2 ¹ / ₃₂ "
PILOT HOUSE TOP AT ℄ UPPER LEVEL	37'-6 ⁵ / ₈ "
" " " " LOWER "	36'-9 ⁷ / ₈ "
NAVIGATING BRIDGE AT ℄ UPPER LEVEL	30'-4 ⁵ / ₈ "
" " " " LOWER "	29'-7 ⁷ / ₈ "
SUPERSTRUCTURE DECK AT ℄	23'-0 ⁵ / ₈ "
MAIN DECK AT STERN (MOLDED)	9'-1 ¹ / ₁₆ "

COMPLEMENT

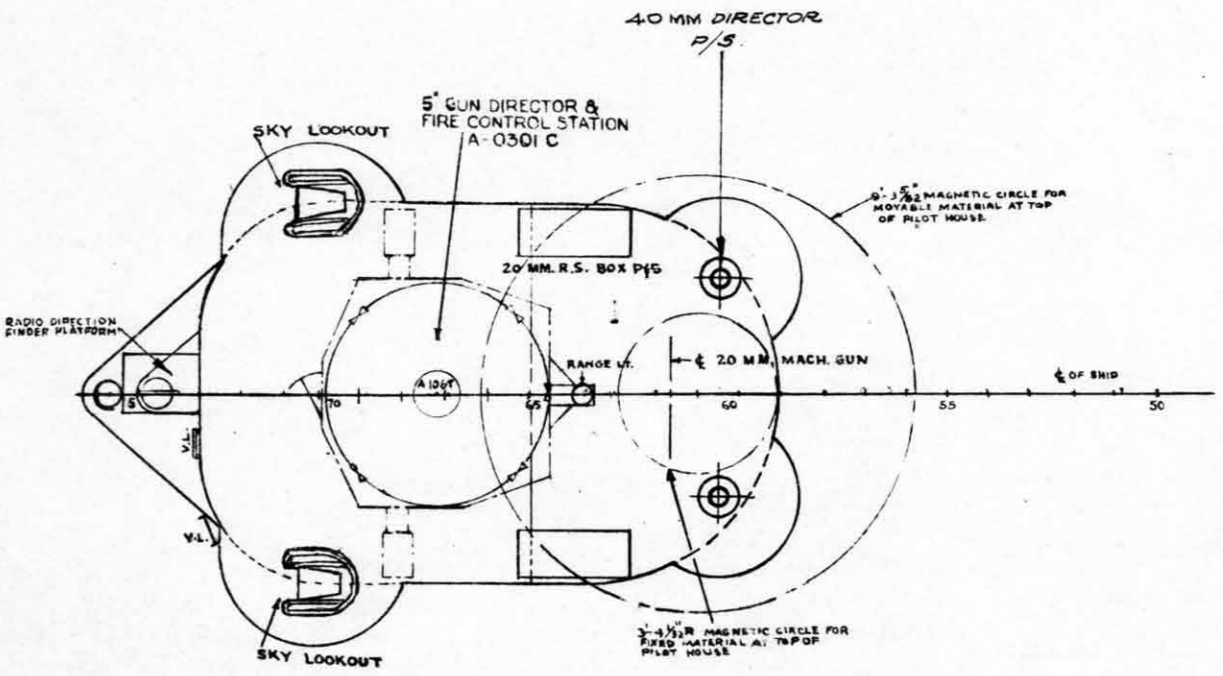
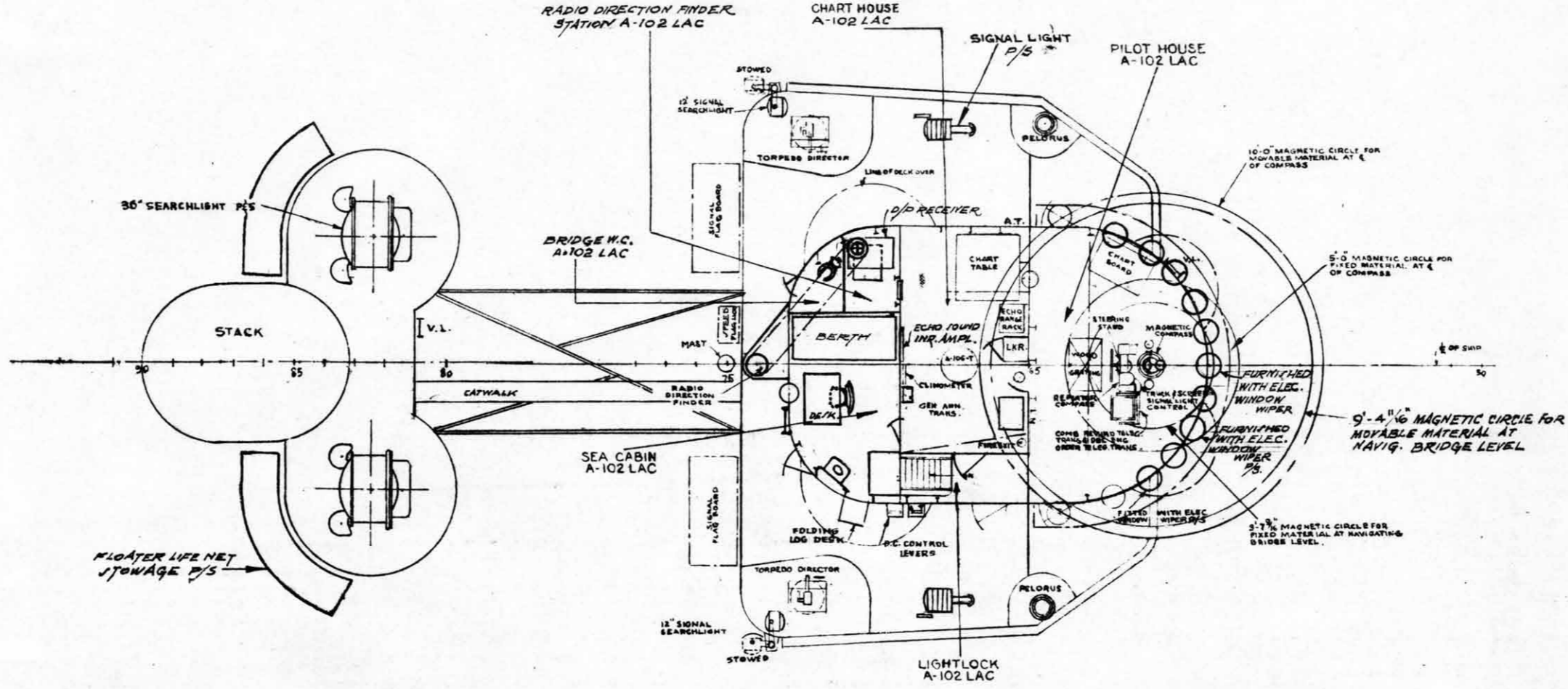
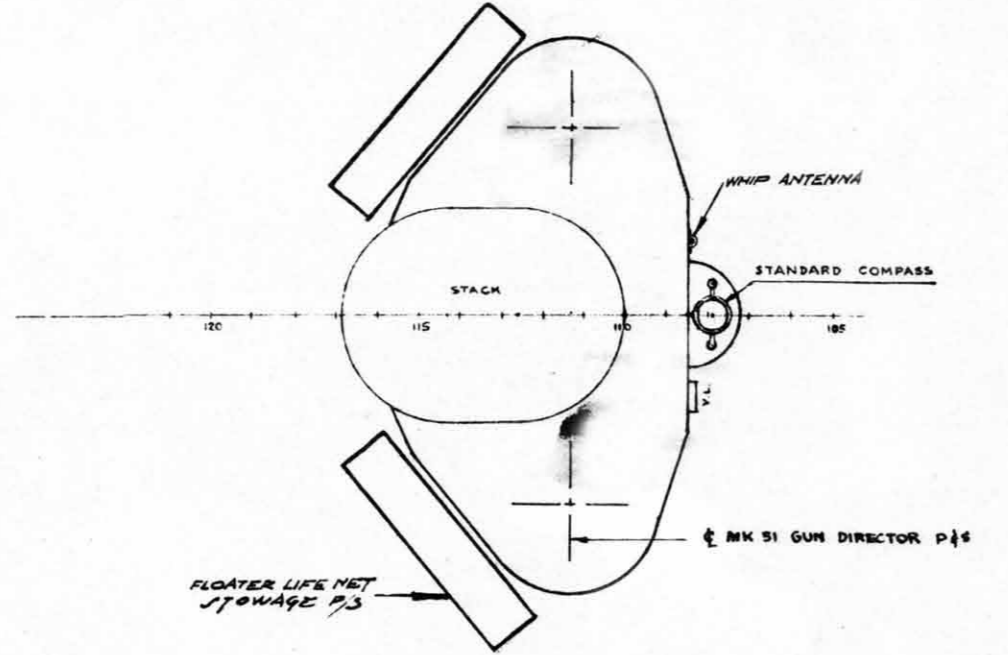
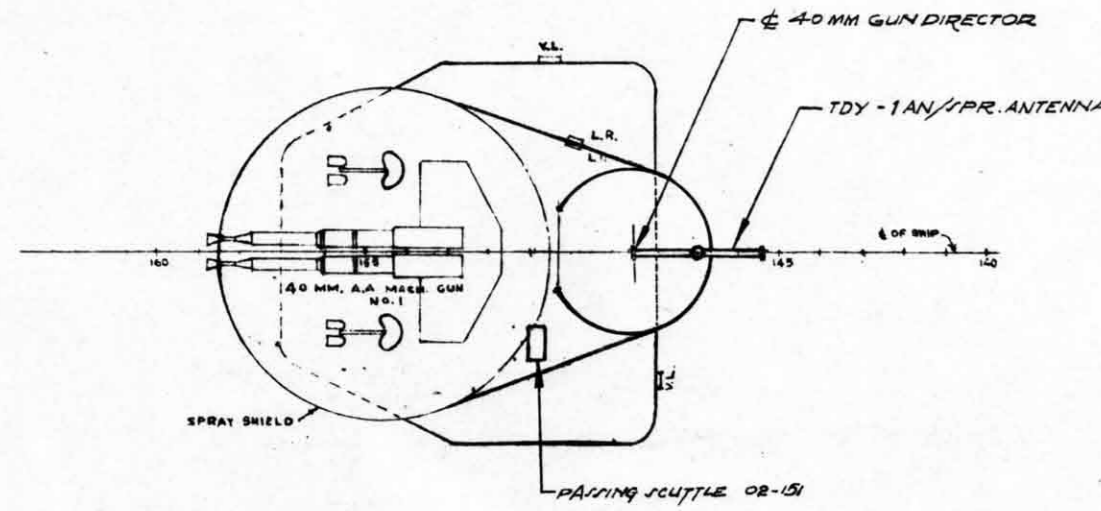
SHIP	FLAG
CAPTAIN --- 1	DIV. COMMANDER ---
WARDROOM --- 12	
C.P.O. --- 15	WARDROOM ---
CREW --- 294	CREW ---
TOTAL 322	
GRAND TOTAL-322	

SMALL BOATS

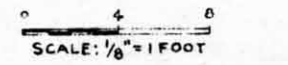
No	NAME	MEN	
		EACH	TOTAL
1	26'-0" OPEN WHALEBOAT (MOTOR)	24	24
1	26'-0" CANOPY WHALEBOAT (MOTOR)	24	24
12	BALSA FLOATS	25	300
TOTAL ACCOMODATIONS			348
7	FLOATERS NETS		

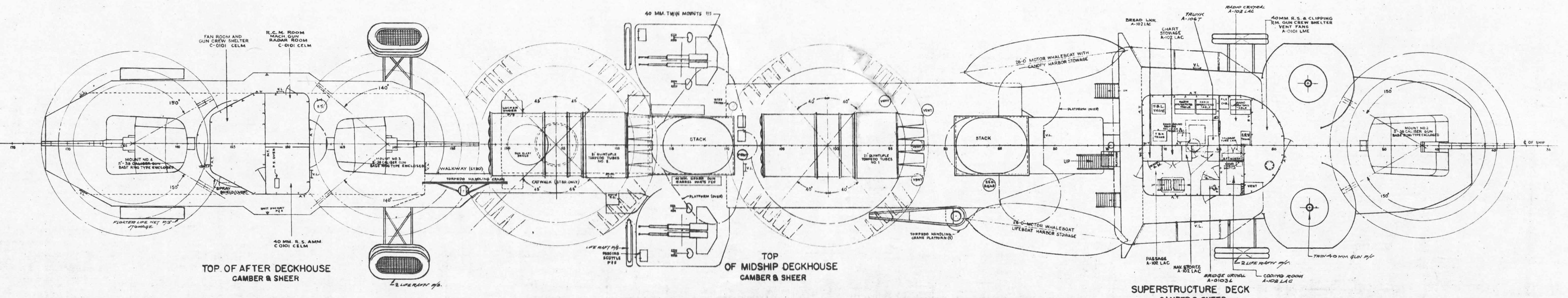


INBOARD PROFILE
 DD 502
 SCALE: 1/8" = 1'-0"



BRIDGES
DD 502





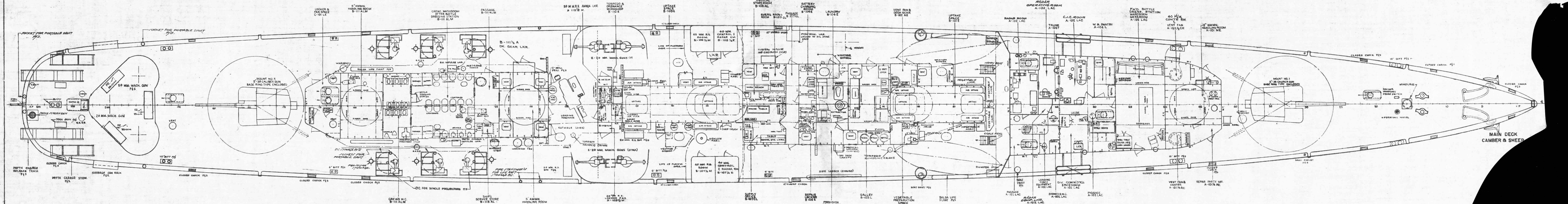
TOP OF AFTER DECKHOUSE CAMBER & SHEER

TOP OF MIDSHIP DECKHOUSE CAMBER & SHEER

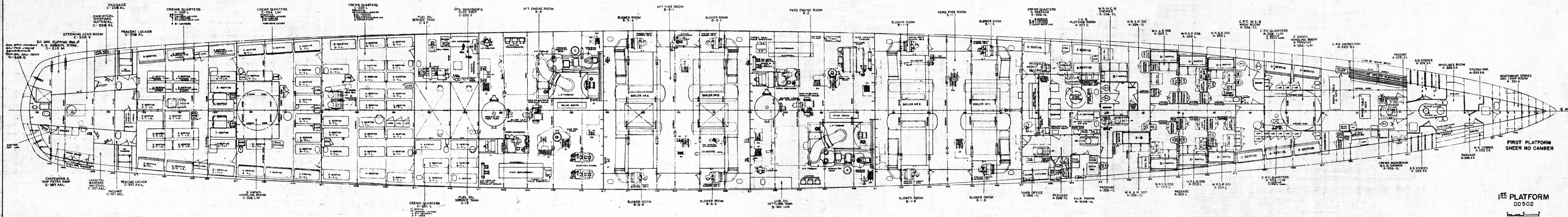
SUPERSTRUCTURE DECK CAMBER & SHEER

SUPERSTRUCTURE DECK DD 502





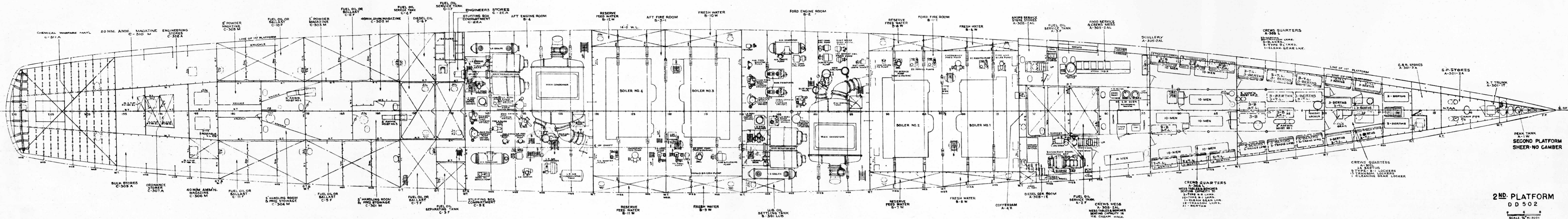
MAIN DECK
CAMBER & SHEER



FIRST PLATFORM SHEER NO CAMBER

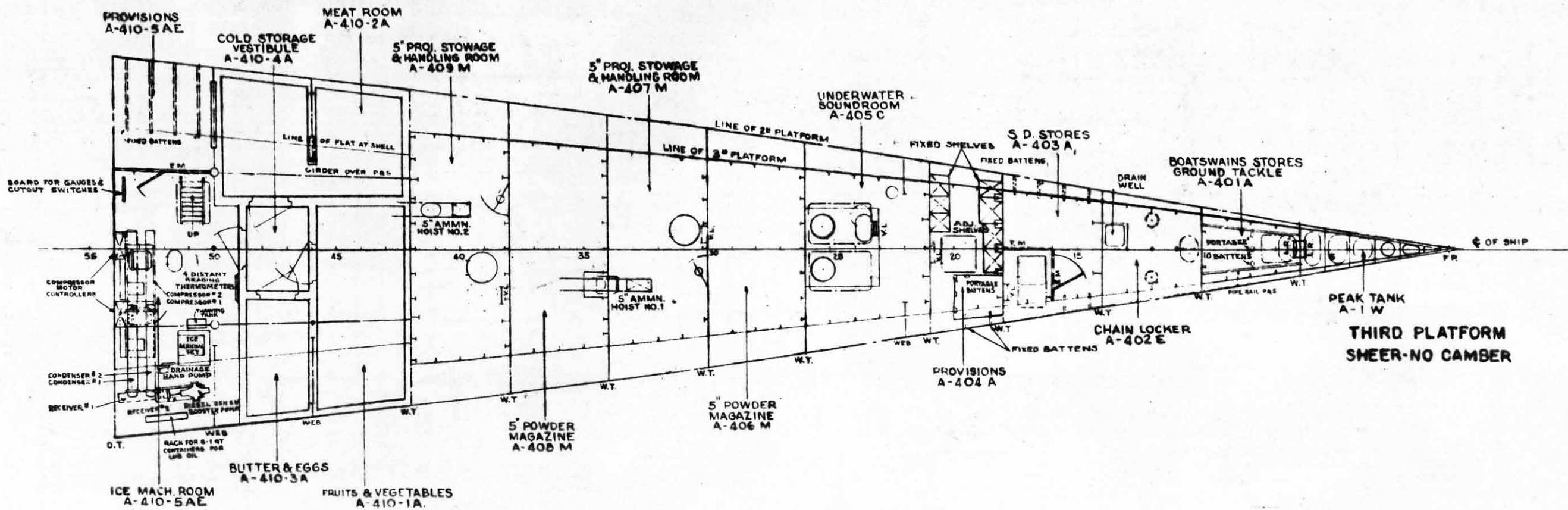
1ST PLATFORM DD 502





2ND PLATFORM
DD 502

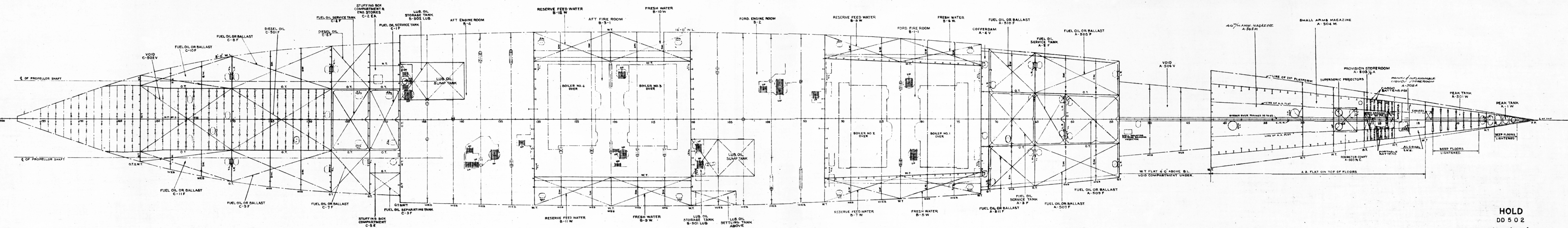
SCALE: 1/8" = 1 FOOT



3RD. PLATFORM

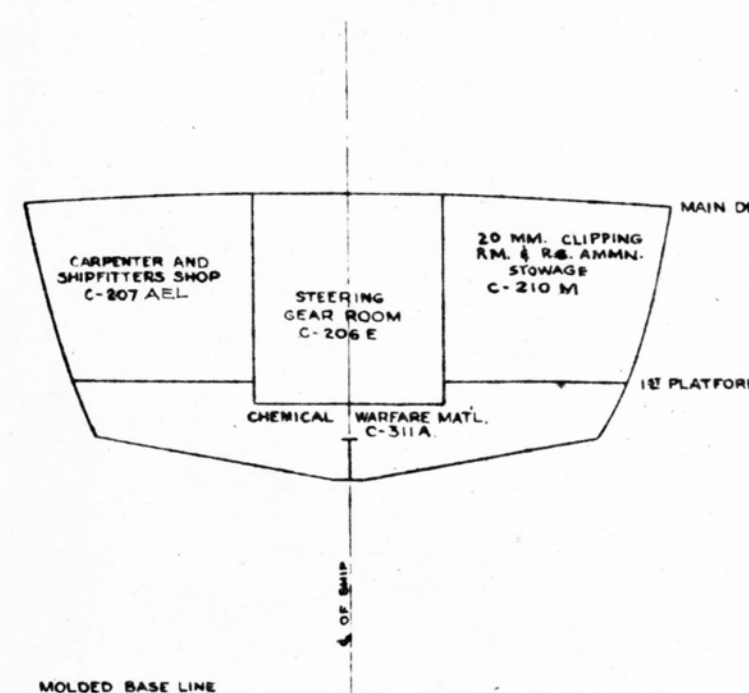
DD 502



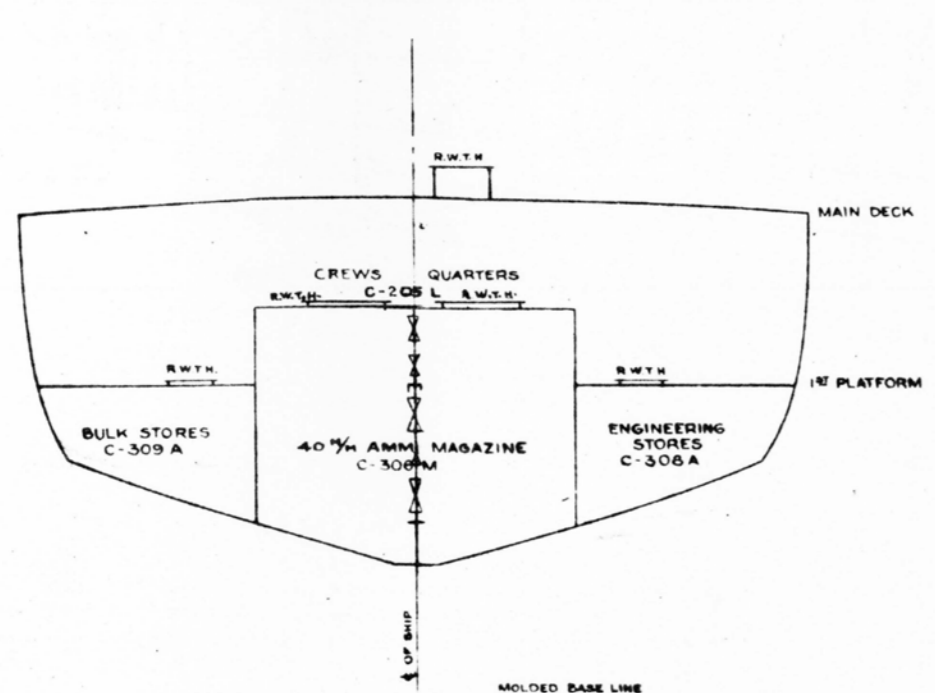


HOLD
DD 502

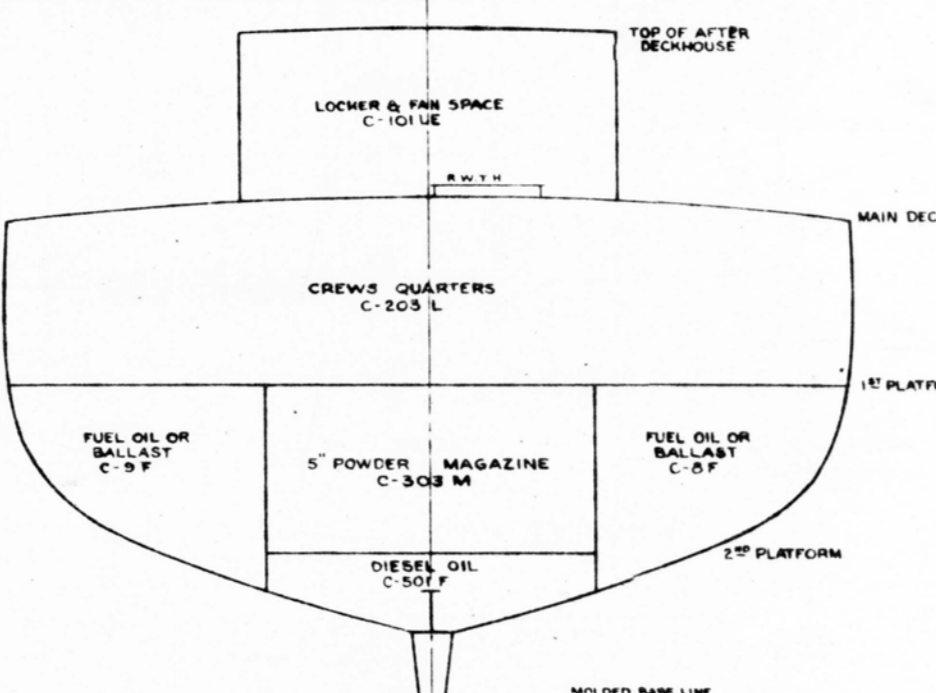
SCALE: 1/8" = 1 FOOT



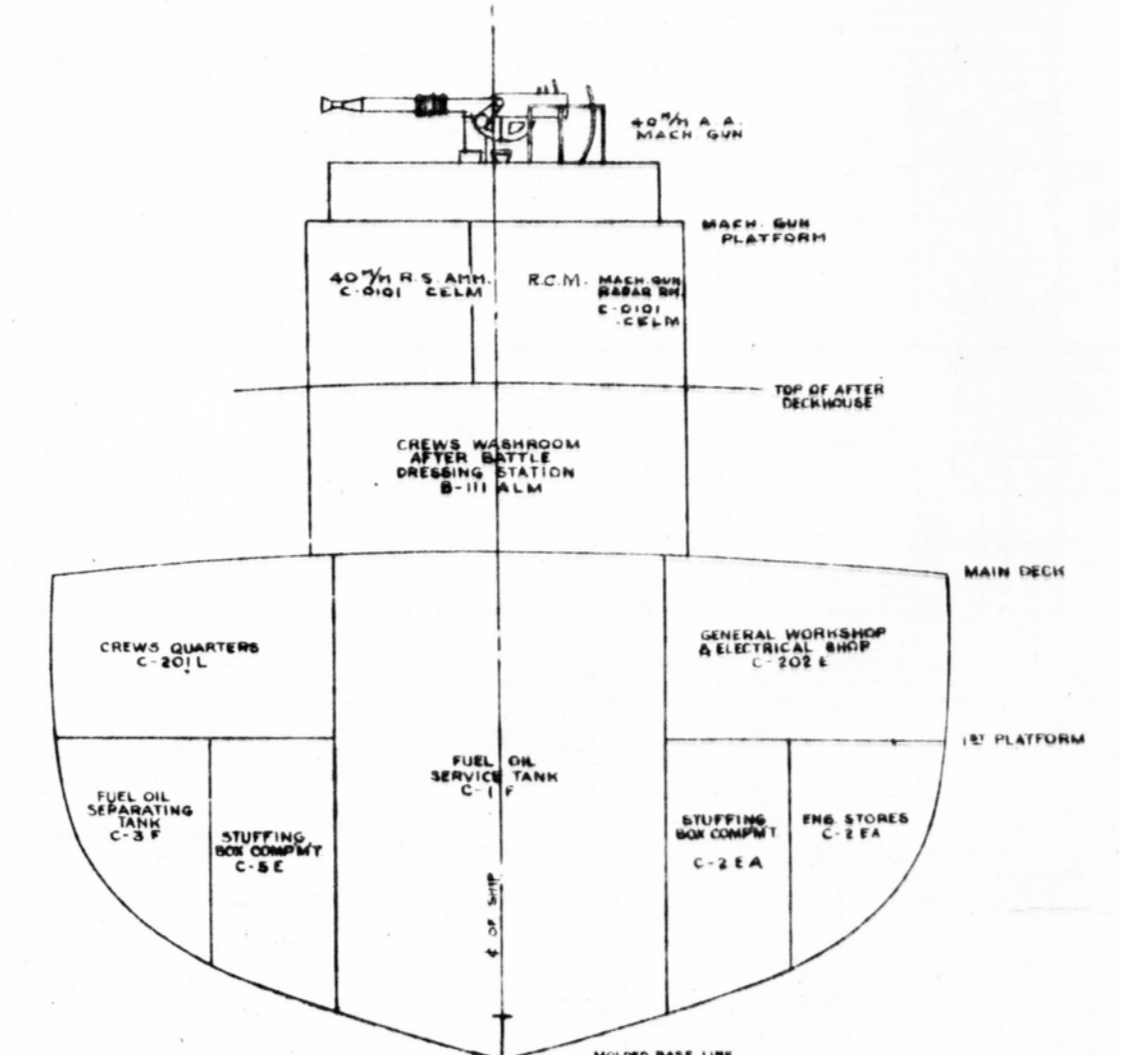
SECTION FR. 206
LOOKING AFT



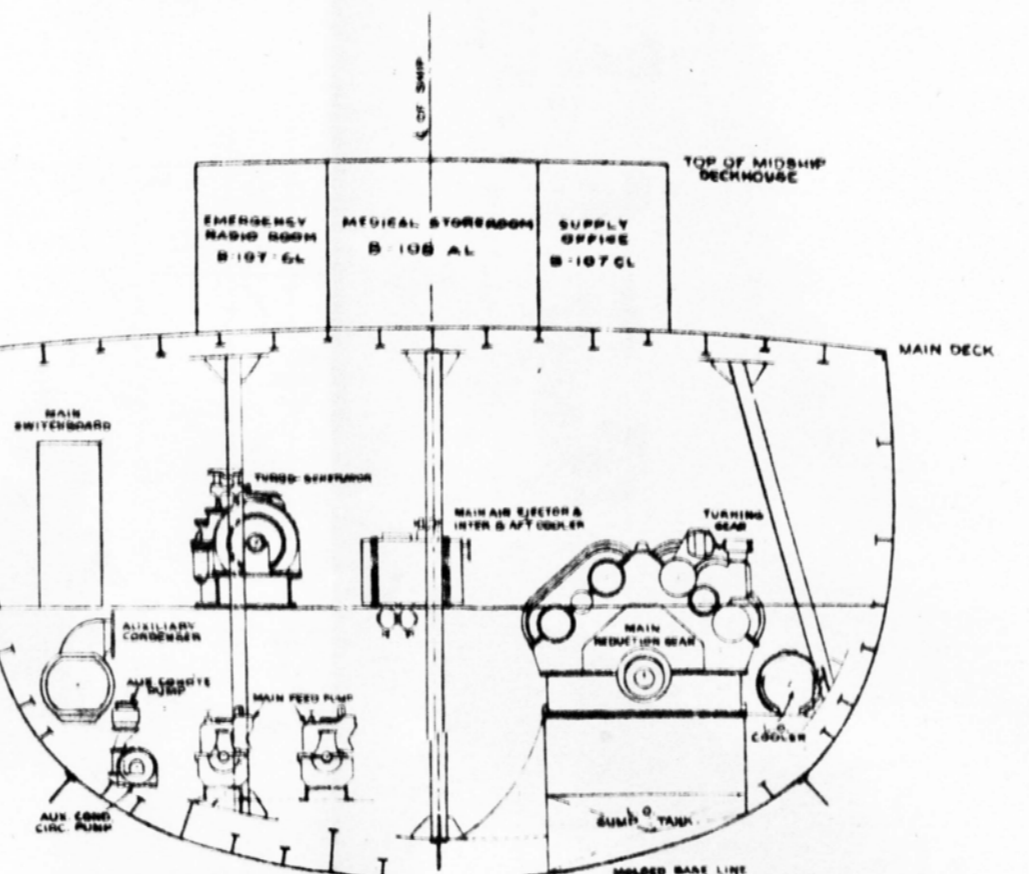
SECTION FR. 184
LOOKING AFT



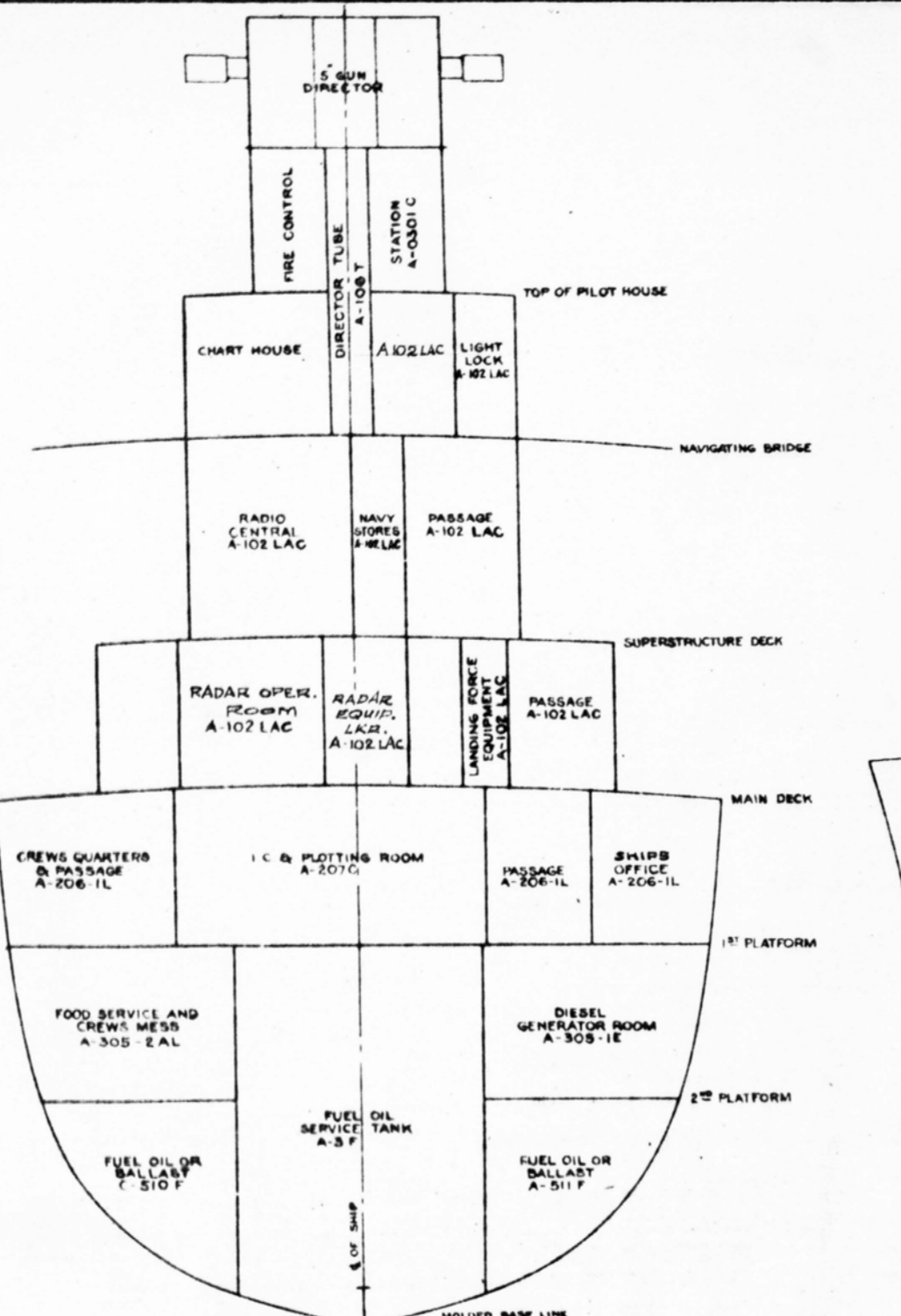
SECTION FR. 168
LOOKING AFT



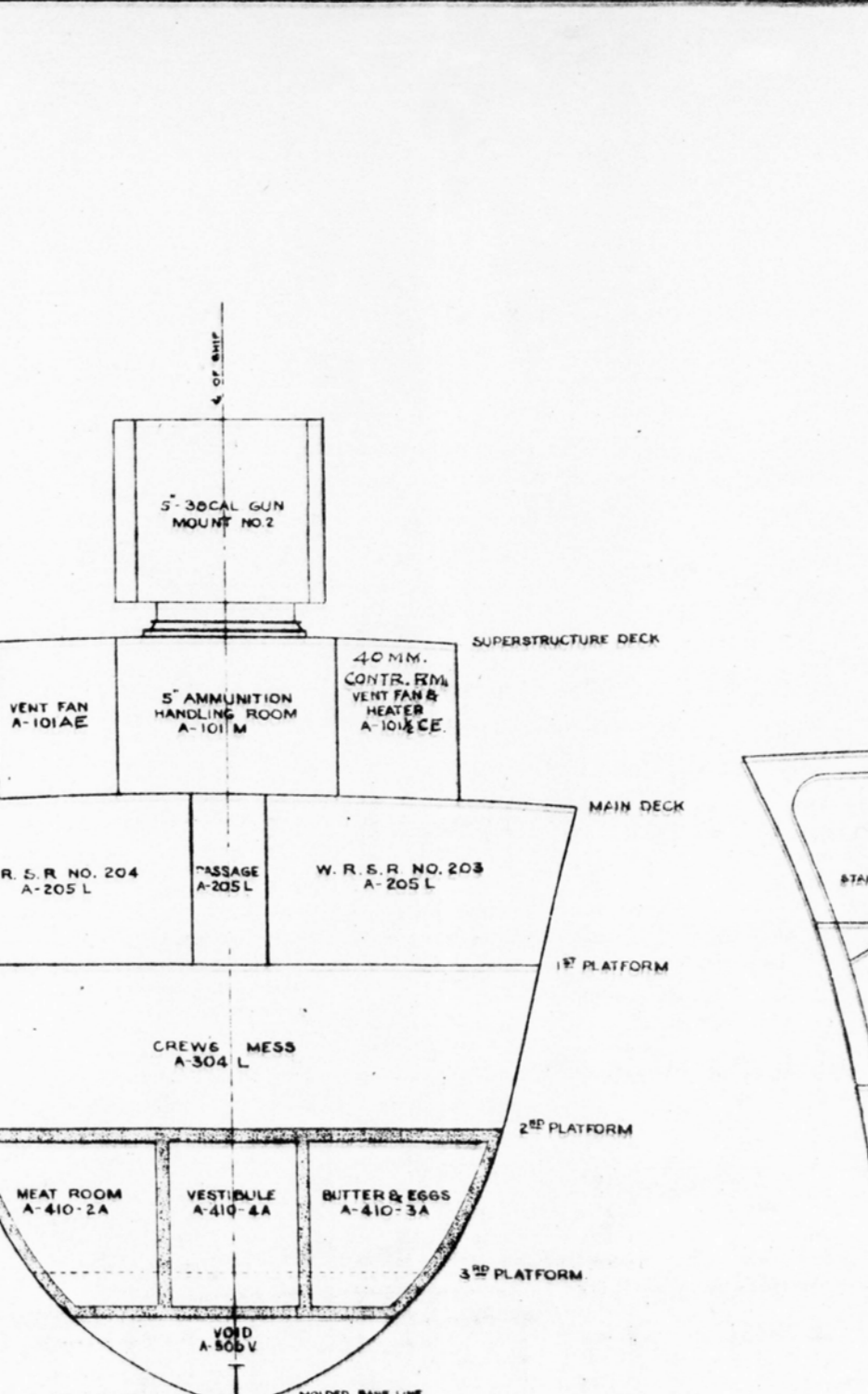
SECTION FR. 150
LOOKING AFT



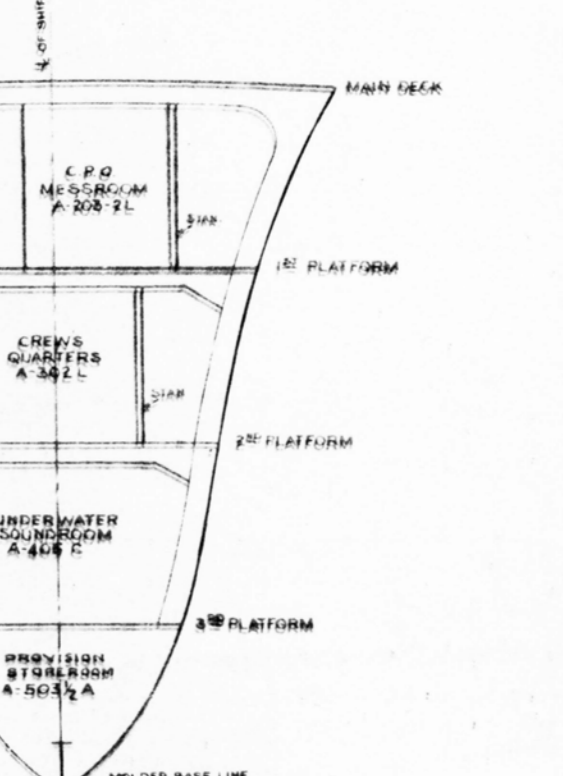
MIDSHIP SECTION
LOOKING FORWARD



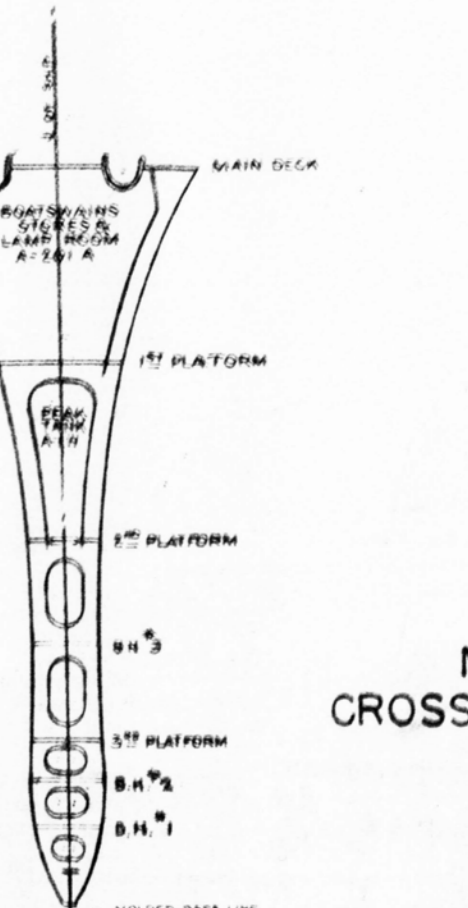
SECTION FR. 68
LOOKING FORWARD



SECTION FR. 48
LOOKING FORWARD



SECTION FR. 22
LOOKING FORWARD



SECTION FR. 5
LOOKING FORWARD

MIDSHIP & TYPE
CROSS SECTION SKETCHES
DD502
SCALE: 1/4" = 1 FOOT